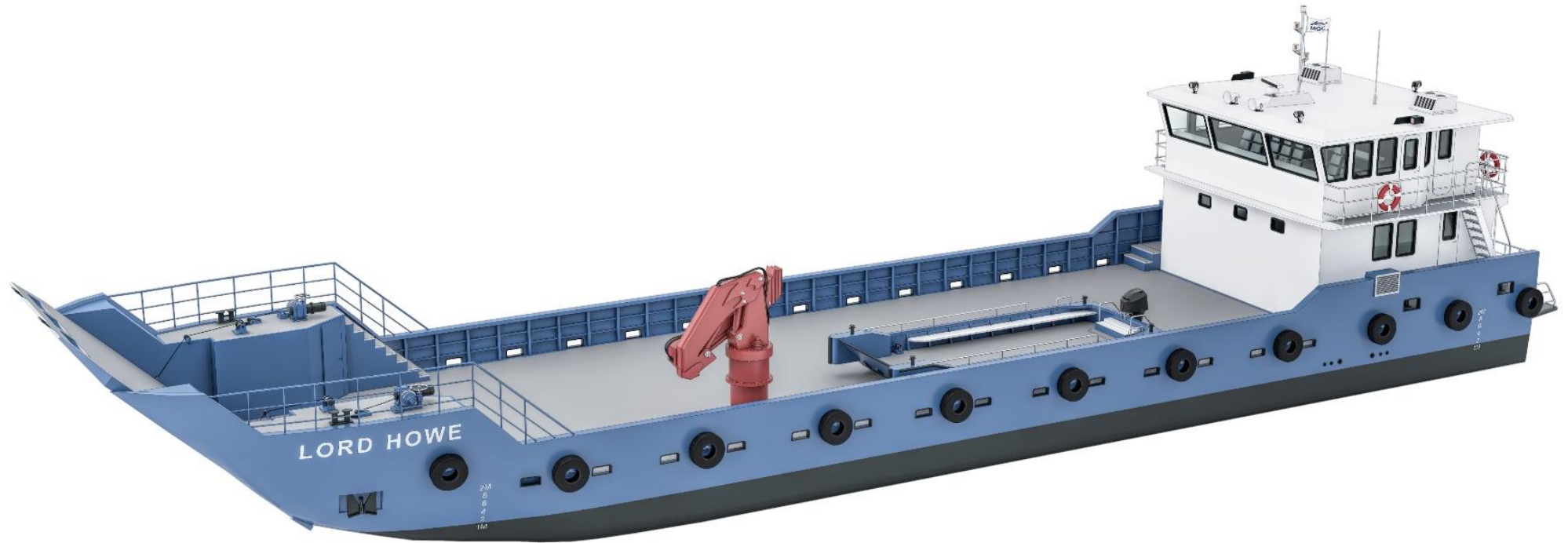


# LORD HOWE SERIES

## 34 m Shallow Draft Landing Craft



# LORD HOWE SERIES

## 34 m Shallow Draft Landing Craft

**VESSEL APPLICATIONS:** Cargo supply services, Dive and ROV support, Survey and Seismic operations, Evacuations and Medevac response, Standby operations, Oil-spill response, Inshore services, including crew transfer, medevac, cargo supply to inner and outer anchorages, relocation of buoyage marks, navigation aid repairs and maintenance etc.

- ✓ Beach landing capabilities with aft anchor and winch for shore assist beaching.
- ✓ Propellers and rudder aligned with keel in tunnels for limiting grounding damage.
- ✓ All fuel oil tanks independent of hull providing double bottom security.
- ✓ Steel Hull and aluminium superstructure, full aluminium available.

# LORD HOWE SERIES

## 34 m Shallow Draft Landing Craft

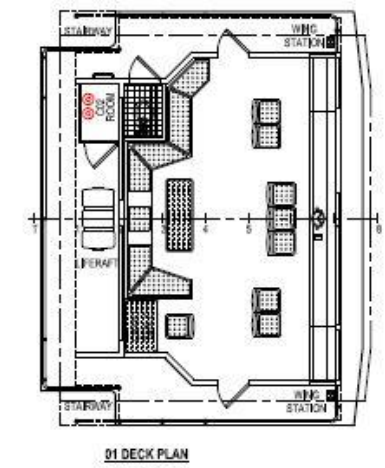
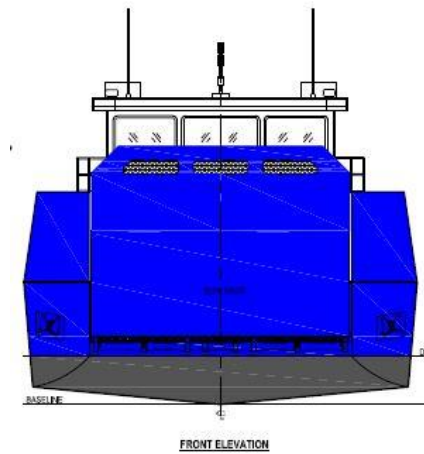
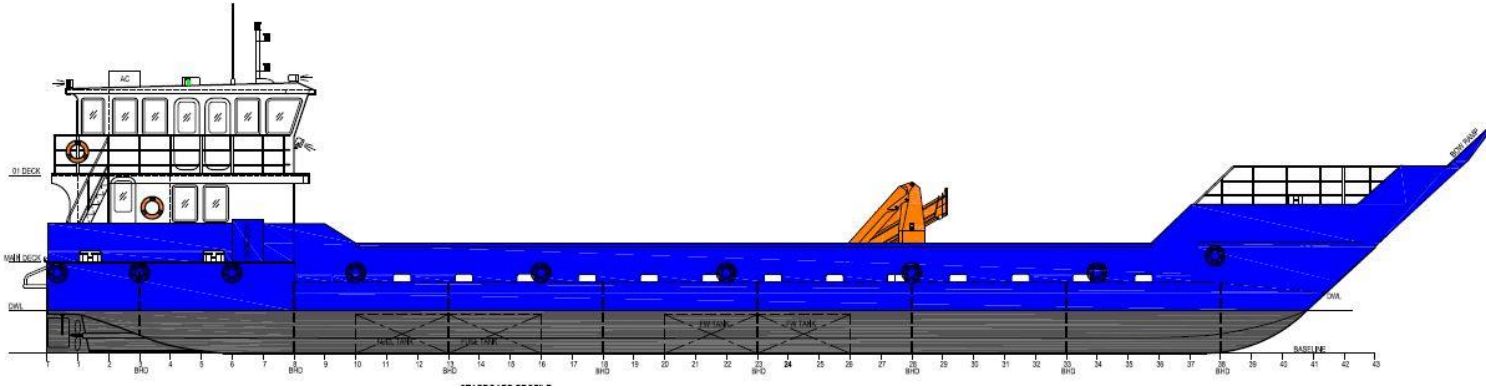
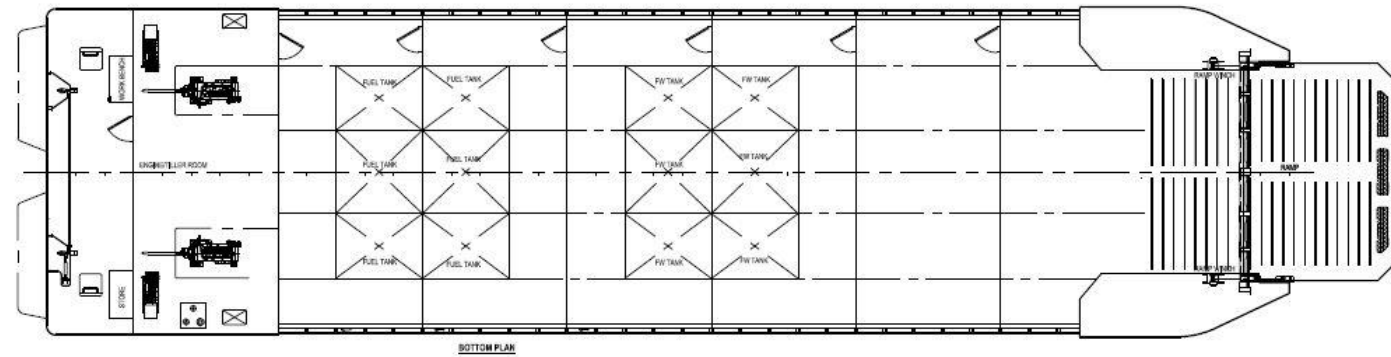
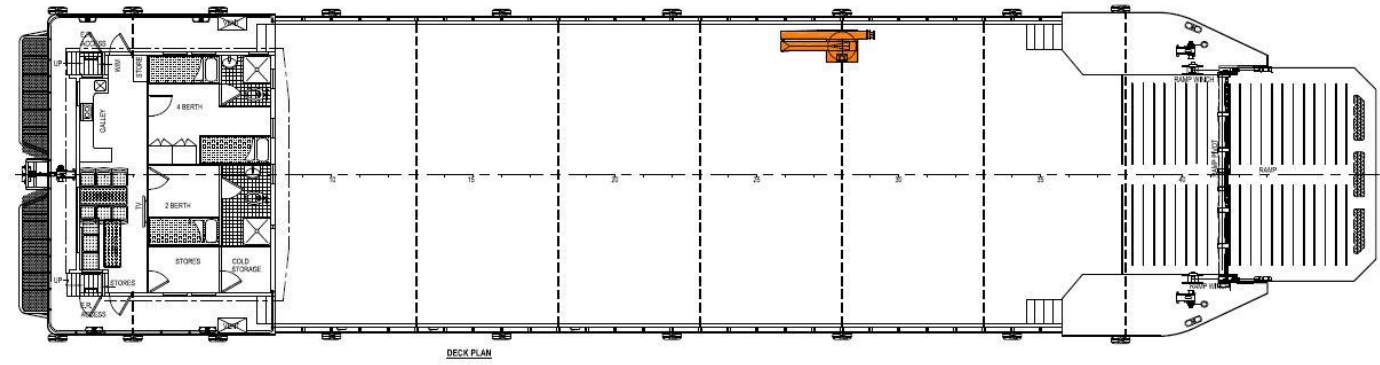
Design: Australian Marine Technology P/L

Builder: MOC Shipyards Pvt Ltd

Classification: BV, Cargo passenger vessel

Flag: TBA

Passenger & crew: 12 + 5 crew



# TECHNICAL SPECIFICATIONS

## DIMENSIONS

**Length:** 34.00 m

**Length at waterline:** 31.20 m

**Beam:** 9.00 m

**Draft:** 2.20 m loaded, 1.10 m lightship

## MACHINERY

**Main Engines:** 2 x 335-410 KW, Caterpillar/ Yanmar

**Auxiliary Engines:** 2 x 45 kVA, Caterpillar/ Yanmar (*recommended*),  
(*optional*): 12 kVA air-cooled to connect to shore power inlet (*in case vessel sits dry in low tide applications*)

**Cooling System:** Keel cooling

**Exhausts:** Dry

**Batteries:** 5 banks for main engines and generators, starting with one emergency bank above weather deck. Rotary colhersee switch to all

**Compressor:** General unit 12 cfm for servicing equipment

**Tools:** Frontline tools, equipment and testing tools for preventative maintenance and on-board breakdowns

## PERFORMANCE

**Maximum Speed:** 10-12 knots @ 100% MCR

**Economic Speed:** 8 knots @ 65% MCR

**Fuel Consumption:** 20 litres/hour at anchorage

(*Subject to machinery*) :130 litres/hour at economic speed

:190 litres/hour at maximum speed

**Range:** 500-2,000 nautical miles (*with 10% reserve*)

## CARGO CAPACITY

**Deadweight:** 200-300.0 tonnes

**Deck Load:** 160.0 – 200.0 tonnes

**Deck Strength:** 2.0 tons/m<sup>2</sup> (*18T axle loading*)

**Clear Deck Area:** 220 m<sup>2</sup>

**Sewage:** (*optional*) 1,000 – 2,000 litres sewage treatment plan

# TECHNICAL SPECIFICATIONS

## TANK CAPACITIES

**Fuel for vessel:** 10,000 – 50,000 litres

**Potable water:** 4,000 – 20,000 litres

**Sewage:** *(optional)* 1,000 litres sewage treatment plant

**Double bottom fuel oil cargo tanks:** *(optional)* 20,000 – 32,000 litres contained within independent removable aluminium tanks ensuring maximum environmental protection (Classification Society Approved)

**Fuel Transfer:** *(optional)* Via manifold system from independent cargo tanks, delivery in excess of 200 meters.

**Photo optional aluminium removable cargo tanks**



## ACCOMODATION

**Air Conditioning:** Split system with heating and cooling providing redundancy throughout the vessel

**Cabins:** *(other layouts available):* 1 x 4 men with ensuite, 1 x captain with ensuite, all with lockable drawers, reading lights, privacy curtains, vertical lockers, power outlets, ladders to upper bunks

**Wheelhouse:** Seating for 16 passengers, Helm seat + 2, 1 x freshwater fountain, 1 x coffee machine, 1 x refrigerator, TV video with LCD screens, 1 x kiosk, 1 office, 1 x WC

**Galley:** Lower deck with seating for 8 persons – twin sinks in galley and kiosk, stove and oven, microwave

**Freezer:** Size to suit

**Bathrooms and Showers:** 2 ensuite and one WC on lower deck, 1 ensuite and 1 WC on upper deck

**TV-Stereo-DVD-VHS-CD:** 4 sets

# TECHNICAL SPECIFICATIONS

## DECK AND HULL MISC.

**Fendering:** Half round rubbing strake and aircraft tyres

**Gangway:** *(optional)* Portable aluminium gangway

**Handling:** Boat Hooks, Grapple with Lanyard

**Deck Equipment:** Recessed tie downs SWL 500 kgs

**Mooring:** Double Bit Bollards – 10 sets

**Plating:** 10.0 mm deck

**Access to water – rescue zone – wharf boarding:** 1,350 mm from waterline with gunnel doors either side of vessel main deck

**Loading ramp:** Electric winch operated 4.95 m clear width – chain gypsys

**Anchor:** 1 x 200 kg bow and 1 x 100 kg transom

**Anchor Winches:** 1 x Electric 8 ton and 1 x Electric 4 ton aft

**Anchor Chain:** 1 x 110 metre and 1 x 80 metre aft

**Pillar Deck Crane:** *(optional)* Fassi F245 1.0 ton SWL at 16.5 m radius with hydraulic extension and winch. Hydraulic Power pack included. *(Other sizes available)*

**Bilge System:** Mechanical pump with electric back-up connected to manifold system. Electric automatic pump in all spaces. Central bilge alarm panel to helm station

## ELECTRONICS *(available Furuno / Simrad to client specifications)*

**Radar:** 48 NM

**Sounder** 1 unit

**Auto Pilot:** *(optional)*

**Plotter:** 1 unit

**GPS:** 1 unit

**VHF Radio:** 1 unit

**Compass:** Furuno SC50

**Barometer and Clock:** One each at main helm station

**AIS:** Simrad MX 535 A

**Search Light:** 2 x Sanshin HR-1012

**Intercom:** GME to machinery space, accommodation area, mess area and helm

**Public Address:** Raymarine 430 with 2 speakers in wheelhouse roof

**Charts:** All current charts for operational areas, hard copies and electronic

**Navigation Lights:** Class approved

**Fog Horn:** Distress signalling type

# TECHNICAL SPECIFICATIONS

## SAFETY EQUIPMENT

**Fire Hoses and Nozzles:** 3 sets with spray nozzles

**Fire Hydrants:** 3 stations

**Fire Control Plan / Muster List:** Class approved

**General Emergency Alarm:** Yes

**Life Rafts:** 2 x 20 man

**Man Over Board Rings:** 6 off, 2 with lights all with lanyards

**Solas Life Jackets:** 20 Solas, 8 deck RFD work vests

**Parachute Rocket Flares:** 4 as per survey requirements

**Hand Held Flares:** 8 as per survey requirements

**First Aid Kits:** 1 x type E, 1 x Sutures kit

**General Emergency Alarm:** Yes

**Torches:** 2 x Signalling

**Fixed Fire Fighting System:** Fitted in machinery spaces  
CO2

**Emergency Escape:** Machinery spaces and accommodation  
areas

**Fuel Shut Off:** Remote operated

**Fog Horn:** Distress signalling type

## LIGHTING

**Navigation Lights:** Port, Starboard, Masthead, Stern & Anchor. 1 x towing, 1 all-round white and 2 all-round red

**Floodlights:** 2 x forward and 2 x aft

**Search Lights:** 2 sets

**Deck Lights:** 6 units recessed

## CERTIFICATION

All vessels are constructed to IACS Classification under the applicable rules of the flag state of destination.

# AMT

AUSTRALIAN MARINE TECHNOLOGY

**Australian Marine Technology Pty Ltd**

PO Box 655, Tugan 4224 Queensland, Australia

Email: [info@mocshipyard.com](mailto:info@mocshipyard.com) Web: [www.mocshipyard.com](http://www.mocshipyard.com)