

MOC HARBOUR SUPPORT

9m Harbour Lines Boat



AMT

AUSTRALIAN MARINE TECHNOLOGY

MOC HARBOUR SUPPORT

9m Harbour Lines Boat

VESSEL APPLICATIONS: Harbour support craft, lines boat, survey boat, small pushing and towing operations, oil-spill response, harbour repairs and maintenance etc.

- ✓ Propeller and rudder protected within a keelson c/w propeller guard.
- ✓ All fuel oil tanks independent of hull providing double bottom security.
- ✓ Steel or aluminium construction available.
- ✓ Open or closed wheelhouse options.

MOC HARBOUR SUPPORT

9m Harbour Lines Boat

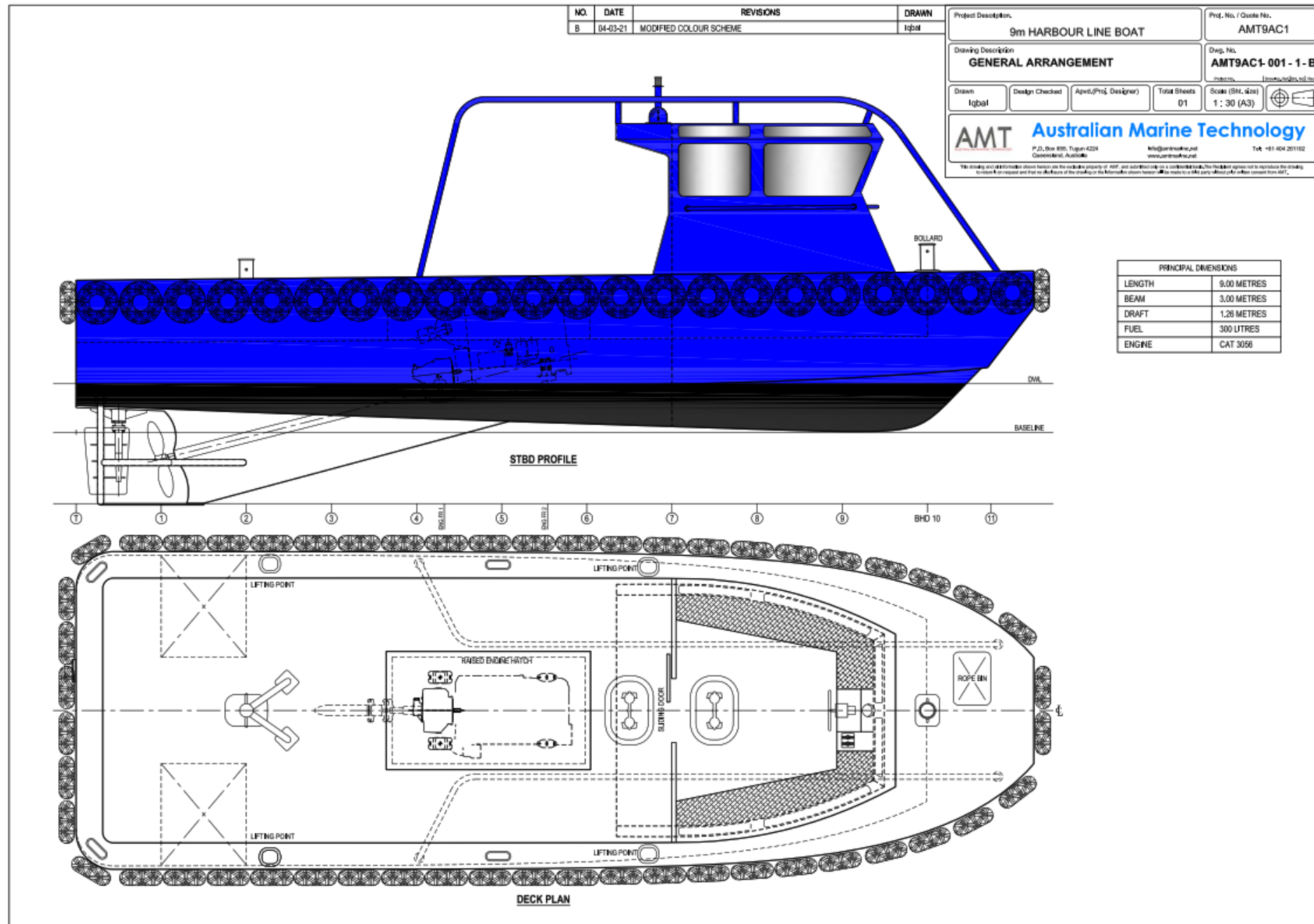
Design: Australian Marine Technology P/L

Builder: MOC Shipyards Pvt Ltd

Classification: IACS certification 1AI Workboat

Flag: TBA

Passenger & crew: 4 + 2 crew



TECHNICAL SPECIFICATIONS

DIMENSIONS

- Length:** 9.0 m
- Length at waterline:** 8.40 m
- Beam:** 3.0 m
- Draft:** 1.26 m loaded

MACHINERY

- Main Engines:** 1 x 130 HP Caterpillar or similar
- Cooling System:** Keel cooling
- Exhausts:** Wet
- Batteries:** 1 bank for main engine, one emergency bank above weather deck.
Rotary colhersee switch to all
- Tools:** Frontline tools, equipment and testing tools for preventative maintenance and on-board breakdowns

PERFORMANCE

- Maximum Speed:** 10 knots @ 100% MCR
- Economic Speed:** 6 knots @ 65% MCR
- Fuel Consumption:** 18 litres/hour at economic speed
: 26 litres/hour at maximum speed
- Range:** 120 nautical miles (*with 10% reserve*)

CARGO CAPACITY

- Deck Load:** 2.0 tonnes
- Deck Strength:** 1.50 tons/m2
- Clear Deck Area:** 15 m2

TECHNICAL SPECIFICATIONS

TANK CAPACITIES

Fuel for vessel: 300 litres

DECK AND HULL MISC.

Fendering: Half round rubbing strake with aircraft tyres

Handling: Boat Hooks, Grapple with Lanyard

Deck Equipment: Recessed tie downs SWL 500 kg

Mooring: Double Bit Bollards – 5 sets

Plating: 5.0 mm deck

Access to water – rescue zone – wharf boarding: 1,150 mm from waterline

Anchor: 1 x 20 kg bow c/w 40 m rope

Bilge System: Mechanical pump with electric back-up connected to manifold system. Electric automatic pump in all spaces. Central bilge alarm panel to helm station

CERTIFICATION

All vessels are constructed to IACS Classification under the applicable rules of the flag state of destination

ELECTRONICS

Sounder: 1 unit

VHF Radio: 1 unit

Compass: Furuno SC50

AIS: Simrad MX 535 A

Search Light: 1 x Sanshin HR-1012

Navigation Lights: Class approved

Fog Horn: Distress signalling type

SAFETY EQUIPMENT

General Emergency Alarm: Yes

Man Over Board Rings: 2 with lights and lanyards

Solas Life Jackets: 8

Parachute Rocket Flares: 4 as per survey requirements

Hand Held Flares: 8 as per survey requirements

First Aid Kits: 1

Torches: 1 x Signalling

Fixed Fire Fighting System: Fitted in machinery spaces CO2



AMT

AUSTRALIAN MARINE TECHNOLOGY

Australian Marine Technology Pty Ltd

PO Box 655, Tugan 4224 Queensland, Australia

Email: info@mocshipyard.com Web: www.mocshipyard.com